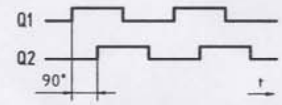
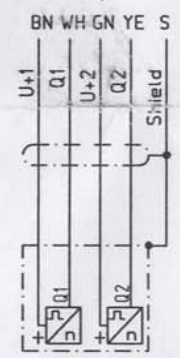


definition of phase position
for forward rotation

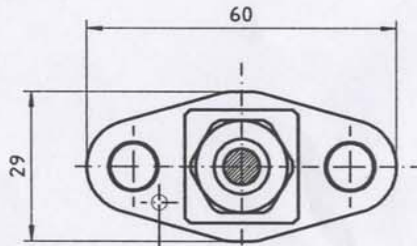


direction of rotation clockwise
Q1 leads Q2 at approx 90° ±10%
with toothed gear modul m2

Connection Diagram

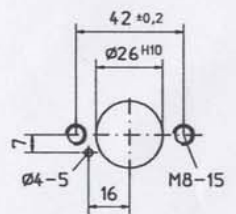


- refer to documents
- safety notes NAN-KD-0001
 - data sheet DB-FA52
 - instruction manual NAN-KD-0006



locating pin DIN1481-3
covered on bottom side

recommended fastening
allen screw DIN 912 M8x20
with spring washer



drill layout
view from above

Gen Tolerance ISO 2768 - mK		Surface DIN ISO 1302		Scale 1:1 10mm		
ISO 8015 note for comparability of drawings FOR SEARCH IN the table of general tolerances		E		Title, supplementary Title		
Technical Ref		Created by J Eisen		Speed Sensor		
Approved by B Bärreis		Responsible Dept R&D - NAN		Series FAH152 / Type FAH152-11-X07		
Date of Issue 10 02 2017		CAD-File 42 252 611 MOD		Creation Date 09 11 2016		
b Tolerance updated 10 02 2017 JEI		NORIS		Part No, Drawing No 42 252 611 0011		
a released 09 11 2016 JEI				Document Type DA		Sheet 1 1
Rev	Description	Date	Name	Origin	Document Status Released	Rep f