

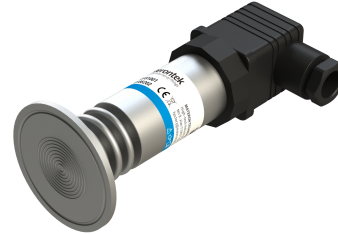
# Model EPT1120-C series

OEM Pressure Transmitter  
Stainless steel flush diaphragm  
For viscous and particle-laden media

**Materontek**  
Sensing and Internet of Things

## Features

- ❑ Measuring ranges from 100mbar to 25bar
- ❑ Gauge pressure, Absolute pressure
- ❑ Accuracy:±0.5%FSO(Typ.)
- ❑ Calibrated and temperature compensated
- ❑ Stainless steel flush diaphragm
- ❑ Output 4...20mA,DC1...5V,DC0.5...4.5V,RS485,etc.



## Application

- ❑ Papermaking
- ❑ Process control systems
- ❑ Food and beverage
- ❑ Medical

## Technical data

### Performance

Accuracy*	±0.5%FS@25°C(Typ.)	*Linearity (best straight line) + Hysteresis + Repeatability
Medium Temperature	-20 to 85°C, 0 to 150°C	
Compensated Temperature Range	-10 to 70°C(P>0.35bar), 0 to 60°C(P≤0.35bar)	
Temp. coeff - Zero	±0.75[Typ.], ±1.5[Max.]	
Temp. coeff - Span	±0.75[Typ.], ±1.5[Max.]	
Vibration	20 g RMS(20 to 2000Hz)	
Shock	100 g(10ms)	
Cycles	10x10 <sup>5</sup>	
Long Term Stability	0.2 %FS[Typ.]	

### Electrical @25°C

Output signal / Supply	2-wire	4...20mA / V <sub>S</sub> = 12...30VDC
	3-wire	1...5VDC / V <sub>S</sub> = 12...30VDC
	3-wire	0.5...4.5VDC / V <sub>S</sub> = 5VDC
	2-wire	4...20mA+HART / V <sub>S</sub> = 12... 30VDC
	4-wire	RS485 Modbus RTU / V <sub>S</sub> = 12... 30VDC
Insulation Resistance	100 MΩ@100VDC	
EMC Test	IEC61000-6-2/IEC61000-6-3	
Reverse polarity protection	No damage - no function	

### Physical Specifications

Housing	304 stainless steel
Diaphragm	316L stainless steel
Sealing	/
Oil Filling	Silicone oil
Protection	IP65
Weight	~290g(without cable)

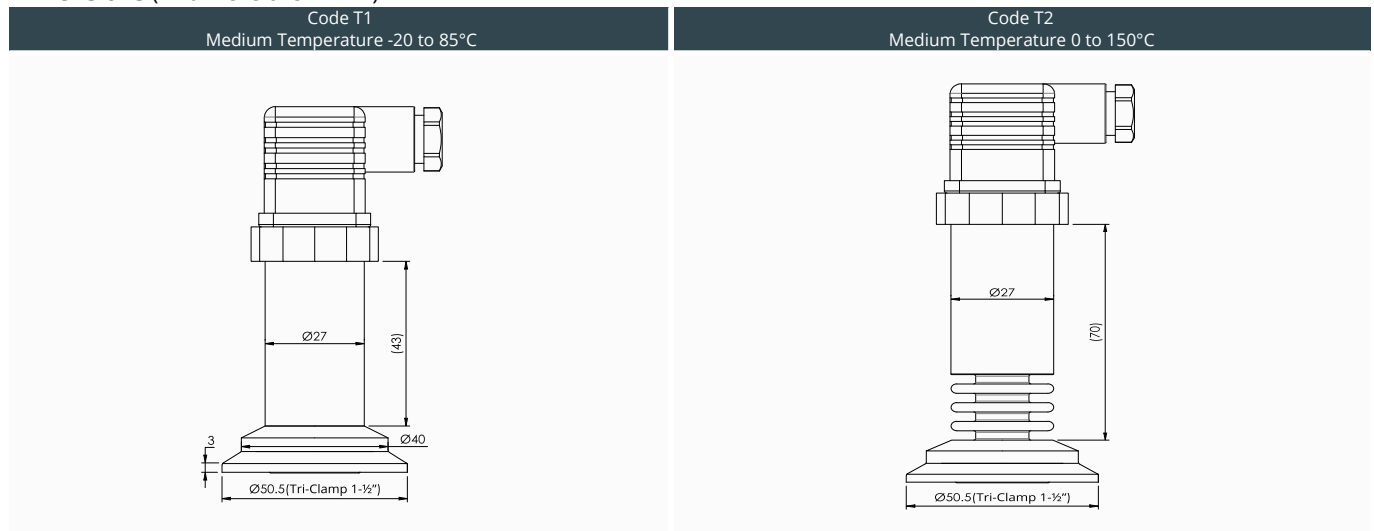
The listed specifications and dimensions are subject to change without prior notice

# Model EPT1120-C series

OEM Pressure Transmitter  
Stainless steel flush diaphragm  
For viscous and particle-laden media

**Materontek**  
Sensing and Internet of Things

## Dimensions (All dimensions in mm)



## Electrical connections

DIN175301 -803-A	4...20mA 2-wire	1...5VDC 3-wire	0.5...4.5VDC 3-wire	RS485 4-wire
+Vcc	1	1	1	1
OUT	2	3	3	-
GND	-	2	2	2
RS485A	-	-	-	3
RS485B	-	-	-	⊕

Connector M12x1(4-pin)	4...20mA 2-wire	1...5VDC 3-wire	0.5...4.5VDC 3-wire	RS485 4-wire
+Vcc	1	1	1	1
OUT	3	4	4	-
GND	-	3	3	3
RS485A	-	-	-	2
RS485B	-	-	-	4

## Standard pressure range

Code	Pressure [bar]	Gauge	Absolute
01	0...0.1	✓	
02	0...0.16	✓	
03	0...0.25	✓	
04	0...0.4	✓	✓
05	0...0.5	✓	✓
06	0...1	✓	✓
07	0...1.6	✓	✓
08	0...2.5	✓	✓
09	0...4	✓	✓
10	0...6	✓	✓
11	0...10	✓	✓
12	0...16	✓	✓
13	0...25	✓	✓

Code	Pressure [bar]	Gauge	Absolute
14	-0.6...0	✓	
15	-0.4...0	✓	
16	-0.25...0	✓	
17	-0.1...0	✓	
18	-1...0	✓	
19	0...-1	✓	
20	-1...+1.5	✓	
21	-1...+3	✓	
22	-1...+9	✓	
23	-1...+15	✓	
24	-1...+16	✓	
25	-1...+24	✓	

## Ordering code

Model	Range	Type	Output/Power supply	Pressure Port	Electrical Connection
EPT1120-C	code	G Gauge	42 4...20mA/12...30VDC	01 Tri-Clamp 1-1/2"	E1 DIN175301-803A/IP65
		A Absolute	15 DC 1...5V/12...30VDC	02 Tri-Clamp 2"	E2 M12 connector/IP65
			05 DC 0...5V/12...30VDC	99 Custom	E3 Cable outlet, 1.5m/IP65
			45 DC 0.5...4.5V/5VDC		E4 Cable outlet, 1.5m/IP68
			10 DC 0...10V/15...30VDC		
			25 DC 0...2.5V/5VDC		
			R4 RS485 Modbus RTU/12... 30VDC		
			HR 4...20mA+HART /12... 30VDC		

Accuracy	Medium Temperature	Label
A1 0.25%FS	T1 -20 to 85°C	S Standard
A2 0.5%FS(Standard)	T2 0 to 150°C	N Neutral packing
A3 1.0%FS		C Custom label