

FTF,800VDC, Amps:100-600A  
 FTF,950VDC, Amps:100-1000A  
 FTF,1450VDC, Amps:100-800A



## Product Description

The URSU/URSE series fuses are specially designed to protect the charging system. Optional rated voltage: 800VDC, 950VDC, 1450VDC. The rated current range is 100-1000A. The breaking capacity is up to 100kA. A micro switch or signal indicator can be carried on request.

Application areas: - charging pile (charging station)  
 - charging and replacing power station

## Technical data

### ■ Rated Voltage

- 800-1450VDC

### ■ Rated Current

- 100-1000A

### ■ Breaking Capacity

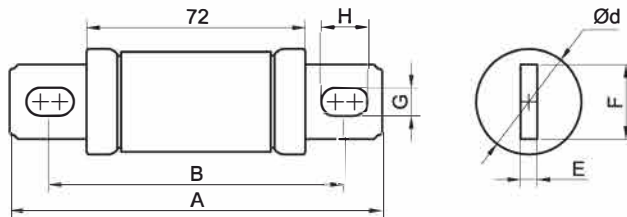
- 60-100kA

FTF,800VDC, Amps:100-600A

FTF,950VDC, Amps:100-1000A

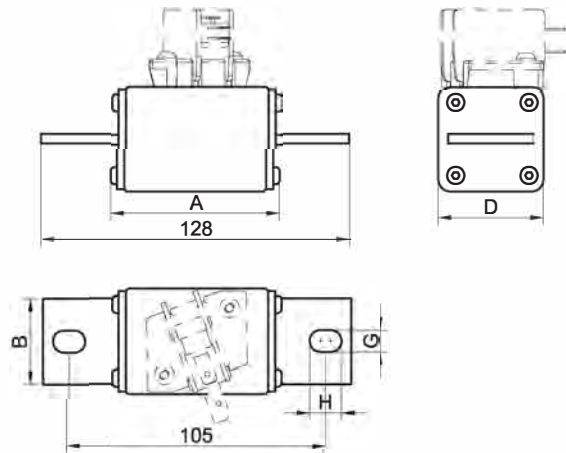
FTF,1450VDC, Amps:100-800A

### Dimensions(mm)



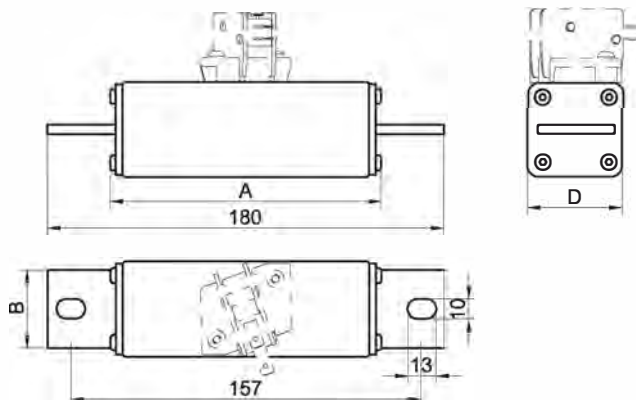
#### URSE8-□-□

Ref.	Current Range	A	B	Ød	E	F	G×H
URSE8-□-B	100-400	115	95	31	4	24	8X13
URSE8-□-C	200-600	129	99	38	6	27	10X17



#### URSE9.5-□-□

Ref.	Current Range	A	B	E	G×H
URSE9.5-□-AM	100-400	74	20	40	8X13
URSE9.5-□-BM	300-600	72	25	48	10X13
URSE9.5-□-CM	500-1000	72	30	58	10X13



#### URSE14.5-□-□

Ref.	Current Range	A	B	E
URSE14.5-□-BM	100-300	124	25	48
URSE14.5-□-CM	400-800	124	30	58

FTF,800VDC, Amps:100-600A

FTF,950VDC, Amps:100-1000A

FTF,1450VDC, Amps:100-800A

### Electrical Specifications

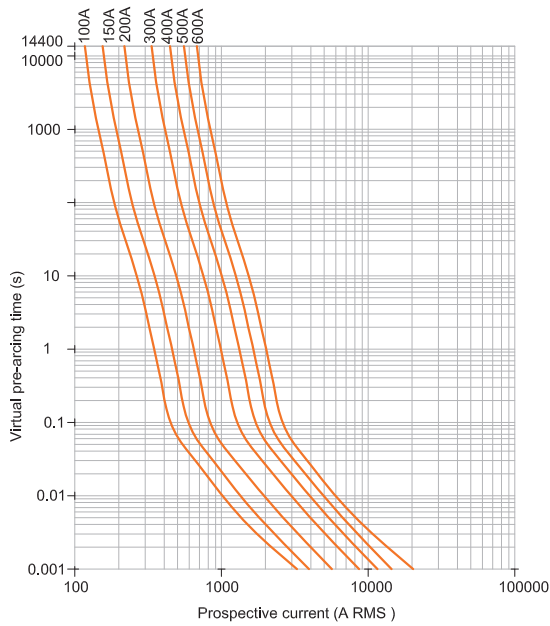
Product number	Current Rating Amps	Breaking Capacity	$I^2t$ (A <sup>2</sup> s) Pre-arcing	Total clear	Power loss Watts loss 100%In
URSU8-100-B	100	60kA @800VDC L/R=10ms	1221	3765	12.0
URSU8-150-B	150		3014	9323	19.0
URSU8-200-B	200		5298	16654	27.0
URSU8-250-B	250		8933	26799	38.8
URSU8-300-B	300		12556	37956	45.0
URSU8-350-B	350		17876	52433	50.0
URSU8-400-B	400		22434	68345	60.0
URSU8-200-C	200		4989	81934	23.0
URSU8-250-C	250		8345	25423	36.0
URSU8-300-C	300		11932	35794	42.0
URSU8-350-C	350		16946	50838	47.0
URSU8-400-C	400		21001	63003	58.0
URSU8-450-C	450		31877	108956	62.0
URSU8-500-C	800		45113	187802	66.3
URSU8-600-C	600		48920	214913	81.3
URSE9.5-100-AM	100	100kA @950VDC L/R=10ms	1280	5504	16.0
URSE9.5-150-AM	150		2880	12384	22.0
URSE9.5-200-AM	200		5120	22016	30.0
URSE9.5-250-AM	250		8000	34400	41.0
URSE9.5-300-AM	300		11520	49536	53.0
URSE9.5-350-AM	350		15680	67424	65.0
URSE9.5-400-AM	400		20480	88064	73.0
URSE9.5-300-BM	300		10598	45573	51.0
URSE9.5-350-BM	350		14426	62030	59.0
URSE9.5-400-BM	400		18842	81019	67.0
URSE9.5-450-BM	450		25920	111456	76.0
URSE9.5-500-BM	500		32000	137600	94.0
URSE9.5-600-BM	600		46080	198144	104.0
URSE9.5-500-CM	500		29440	126592	90.0
URSE9.5-600-CM	600		42394	182292	100.0
URSE9.5-700-CM	700	62720	269696	110.0	
URSE9.5-800-CM	800	81920	352256	125.0	
URSE9.5-900-CM	900	103680	445824	139.0	
URSE9.5-1000-CM	1000	128000	550400	153.0	
URSE14.5-100-BM	100	100kA @1450VDC L/R=10ms	1512	7561	30.0
URSE14.5-150-BM	150		3403	17013	38.0
URSE14.5-200-BM	200		6049	30246	47.8
URSE14.5-250-BM	250		9452	47259	56.3
URSE14.5-300-BM	300		13611	68053	62.4
URSE14.5-350-CM	350		18526	92628	64.5
URSE14.5-400-CM	400		24197	120983	75.9
URSE14.5-450-CM	450		30624	153119	83.4
URSE14.5-500-CM	500		37807	189036	96.0
URSE14.5-600-CM	600		54442	272212	117.0
URSE14.5-700-CM	700		74102	370510	142.0
URSE14.5-800-CM	800		96786	483932	173.0

FTF,800VDC, Amps:100-600A

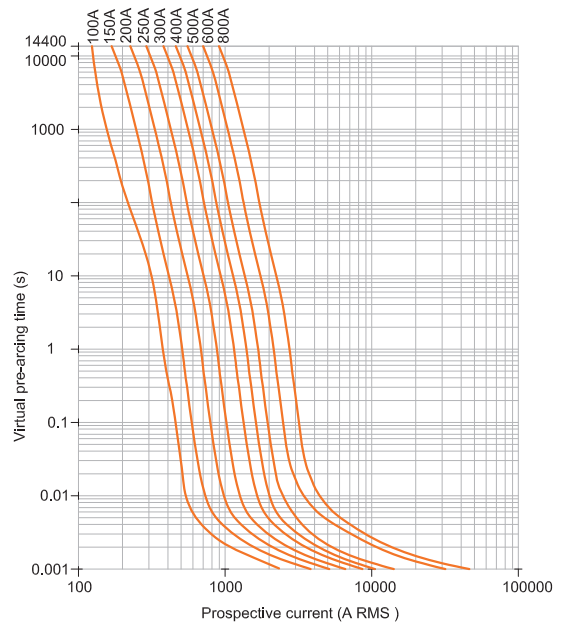
FTF,950VDC, Amps:100-1000A

FTF,1450VDC, Amps:100-800A

800VDC Time-Current Characteristics



1450VDC Time-Current Characteristics



950VDC Time-Current Characteristics

