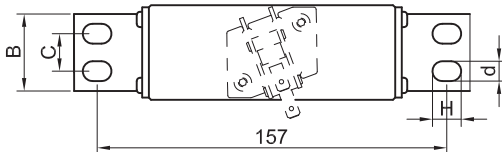
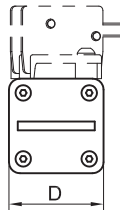
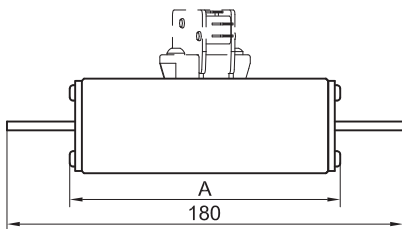
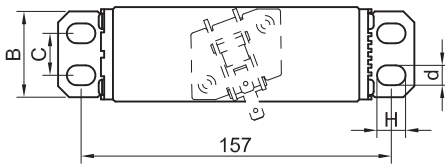
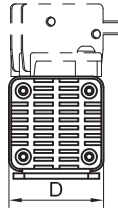
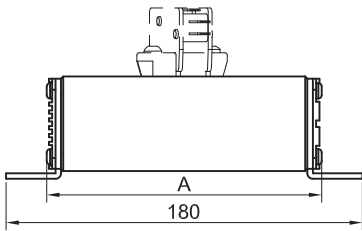


FTF, 1200VDC, Amps:10-1000A



Dimensions(mm)



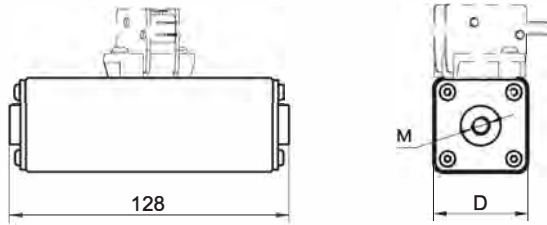
L Type Amps: 100-1000A

Ref.	A	B	C	D	d×H
EVE12-□-AL	132	38	0	40	8X13
EVE12-□-BL	130	46	0	48	10X13
EVE12-□-CL	130	55	28	58	8X13
EVE12-□-DL	130	70	40	74	10X13

M Type Amps: 100-1000A

Ref.	A	B	C	D	d×H
EVE12-□-AM	126	20	0	40	8X13
EVE12-□-BM	124	25	0	48	10X13
EVE12-□-CM	124	30	0	58	10X13
EVE12-□-DM	124	50	25	74	10X13

## FTF, 1200VDC, Amps: 10-1000A



## F Type Amps: 100-1000A

Ref.	D	M
EVE12-□-AF	40	M8
EVE12-□-BF	48	M8
EVE12-□-CF	58	M12
EVE12-□-DF	74	M12

## Electrical Specifications

Product number	Current rating Amps	Breaking Capacity	$I^2t(A^2s)$ Pre-arcing	Total clear	Power loss Watts loss 100%In
EVE12-100-AL(F/M)	100	100kA @1200VDC L/R=20ms	1486	6688	20.0
EVE12-125-AL(F/M)	125		2322	10451	30.0
EVE12-150-AL(F/M)	150		3344	15049	39.0
EVE12-175-AL(F/M)	175		4552	20483	48.0
EVE12-200-AL(F/M)	200		5945	26754	56.0
EVE12-250-AL(F/M)	250		9290	41803	64.0
EVE12-300-AL(F/M)	300		13377	60196	77.0
EVE12-350-BL(F/M)	350		18207	81934	89.0
EVE12-400-BL(F/M)	400		23781	107015	97.0
EVE12-450-BL(F/M)	450		30098	135441	110.0
EVE12-500-CL(F/M)	500		37158	167212	118.0
EVE12-600-CL(F/M)	600		53508	240785	130.0
EVE12-700-CL(F/M)	700		72830	327735	142.0
EVE12-800-DL(F/M)	800		95125	428062	156.0
EVE12-900-DL(F/M)	900		120392	541766	168.0
EVE12-1000-DL(F/M)	1000		148633	668847	180.0

## Time-Current Characteristics

