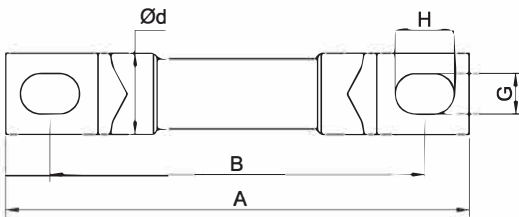
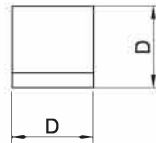
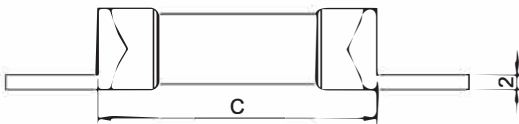


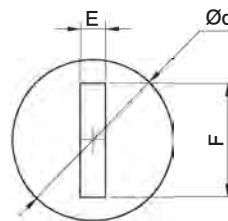
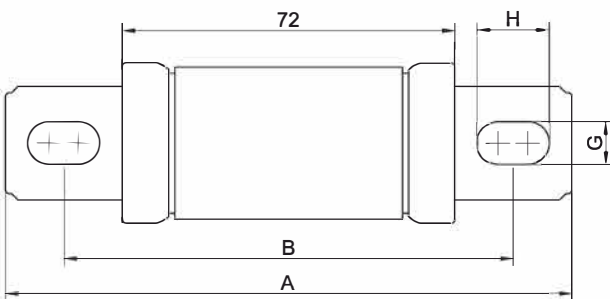
FTF, 1000VDC, Amps: 10-1500A



## Dimensions(mm)


**ESU10-□ Amps: 10-80A**

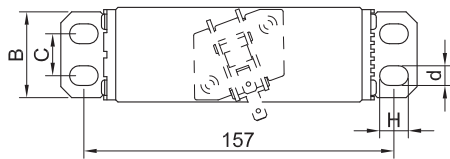
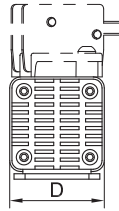
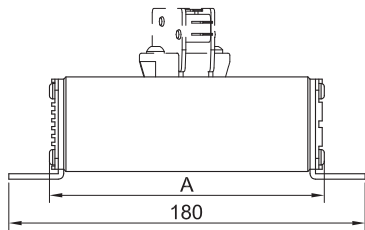
Ref.	Current Range	A	B	C	Ød	D	G×H
ESU10-□	10-30	65	53	38	11	11	5.5X8
ESU10-□	40-80	77	63	45	19	19	7X9


**ESU10-□-□ Amps: 100-600A**

Ref.	Current Range	A	B	Ød	E	F	G×H
ESU10-□-B	100-200	115	95	31	4	24	8X13
ESU10-□-C	250-400	129	99	38	6	27	10X17
ESU10-□-D	450-600	129	99	51	6	40	10X17

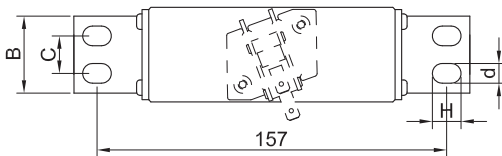
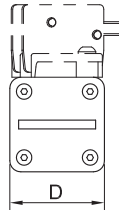
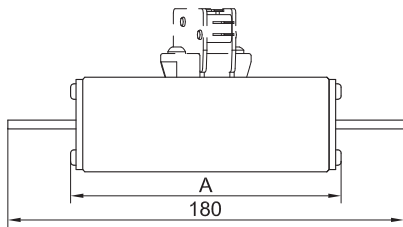
FTF, 1000VDC, Amps: 10-1500A

Dimensions(mm)



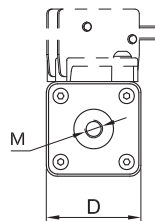
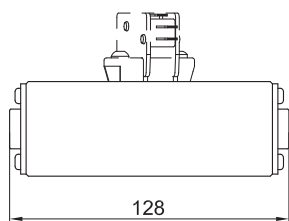
L Type Amps: 100-1500A

Ref.	A	B	C	D	d×H
ESE10-□-AL	132	38	0	40	8X13
ESE10-□-BL	130	46	0	48	10X13
ESE10-□-CL	130	55	28	58	8X13
ESE10-□-DL	130	70	40	74	10X13



M Type Amps: 100-1500A

Ref.	A	B	C	D	d×H
ESE10-□-AM	126	20	0	40	8X13
ESE10-□-BM	124	25	0	48	10X13
ESE10-□-CM	124	30	0	58	10X13
ESE10-□-DM	124	50	25	74	10X13



F Type Amps: 100-1500A

Ref.	D	M
ESE10-□-AF	40	M8
ESE10-□-BF	48	M8
ESE10-□-CF	58	M12
ESE10-□-DF	74	M12

# FTF, 1000VDC, Amps: 10-1500A

## Electrical Specifications

Product number	Amps	Breaking Capacity	I <sup>2</sup> t(A <sup>2</sup> s) Breaking Capacity	Total clear	Watts loss 100%In
ESU10-10	10	30kA @1000VDC L/R=8ms	7	49	1.5
ESU10-20	20		40	280	2.8
ESU10-30	30		98	686	3.2
ESU10-40	40		222	1000	4.0
ESU10-50	50		347	1563	5.0
ESU10-60	60		500	2250	6.0
ESU10-80	80		889	4000	8.5
ESU10-100-B	100		1528	6875	12.0
ESU10-125-B	125		2387	10742	17.0
ESU10-150-B	150		3438	15469	19.0
ESU10-200-B	200	6111	27500	27.0	
ESU10-250-C	250	50kA @1000VDC L/R=10ms	9549	42969	40.0
ESU10-300-C	300		13750	61875	46.3
ESU10-350-C	350		18715	84219	54.0
ESU10-400-C	400		24444	110000	62.5
ESU10-450-D	450		30938	139219	65.0
ESU10-500-D	500		38194	171875	72.5
ESU10-600-D	600		55000	247500	85.0
ESE10-100-AL(F/M)	100		1389	6250	10.3
ESE10-125-AL(F/M)	125		2170	9766	15.0
ESE10-150-AL(F/M)	150		3125	14063	19.0
ESE10-200-AL(F/M)	200	5556	25000	25.0	
ESE10-250-AL(F/M)	250	8681	39063	38.0	
ESE10-300-AL(F/M)	300	12500	56250	44.0	
ESE10-350-AL(F/M)	350	17014	76563	52.0	
ESE10-400-AL(F/M)	400	22222	100000	60.0	
ESE10-450-BL(F/M)	450	28125	126563	64.0	
ESE10-500-BL(F/M)	500	100kA @1000VDC L/R=10ms	34722	156250	69.0
ESE10-600-BL(F/M)	600		50000	225000	83.0
ESE10-700-CL(F/M)	700		68056	306250	96.0
ESE10-800-CL(F/M)	800		88889	400000	102.0
ESE10-900-CL(F/M)	900		112500	506250	123.0
ESE10-1000-CL(F/M)	1000		138889	652000	142.0
ESE10-1100-DL(F/M)	1100		168056	756250	164.0
ESE10-1200-DL(F/M)	1200		200000	900000	183.0
ESE10-1300-DL(F/M)	1300		234722	1056250	209.0
ESE10-1400-DL(F/M)	1400		272222	1225000	243.0
ESE10-1500-DL(F/M)	1500	312500	1406250	287.0	