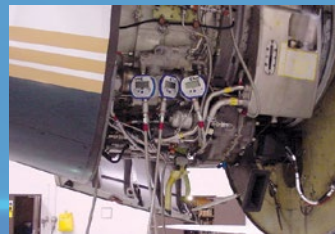


CECOMP Pressure and Temperature Measurement Products



*American Owned
American
Engineered
American Built
American Pride*



cecomp.com 800-942-0315

Div. of Absolute Process Instruments, Inc., 1220 American Way Libertyville, IL 60048, Fax: 800-949-7502

BATTERY POWERED TEST GAUGES

- ±0.25% or ±0.1% Accuracy
- Proven Stability and Reliability
- Chose Selectable Units, Memory, Min/Max
- 316L SS Sensor

Ranges

See range table for available engineering units
 Vacuum to 5000 psi, gauge, absolute, bipolar, compound
 ARM760: 760 Torr absolute

Accuracy

Standard: ±0.25% FS, ±1 LSD
 Standard CTP: ±0.1% FS, ±1 LSD (most ranges)
 Optional: HA ±0.1% FS, ±1 LSD (most ranges)

Display

ARM760, DPG1000, F4 ranges to 1999
 3.5 digit LCD, 0.5" H digits
 DPG1000, F4 ranges 2000-up, F16, F20, F22, CTP
 4 digit LCD, 0.5" H, 0.25" H alphanumeric lower display
 3 readings per second update rate
 BL: Red LED display backlight, white LED for CTP

Controls

ARM760, DPG1000, F4 ranges to 1999
 Front button turns gauge on/off, zero, span pots.
 DPG1000, F4 ranges 2000-up, F16, CTP1
 Front button for on/off, zero gauge, internal cal buttons
 F20, F22, CTP3
 3 button keypad for operation, setup, calibration

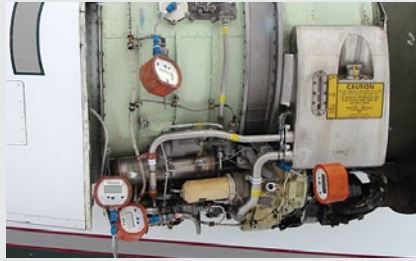
Auto Shutoff

DPG1000, F4 ranges to 1999
 Factory set to 5, 10, 30 minutes, or on/off
 DPG1000, F4 ranges 2000-up
 Factory set to any number of minutes or hours
 F16, F20, F22, CTP
 User settable to any number of minutes or hours

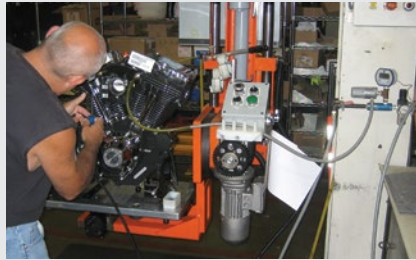
Batteries and Battery Life

Two AA alkaline
 B: up to 2500 hours
 BBL: approx. 150 to 1500 hours

- Portable and Rugged Test Gauge
- Auto Racing Tire Pressure
- Leak Down Testing
- ARM Replaces Mercury Manometers



Turbine engine gear case seal testing



Leak Down Testing



Auto racing tire pressure



DPG1000B with RB rubber boot



F16B

Info Quick Link
cecomp.com/bat

MADE IN USA



CTP1B

NEW!

CTP3B



FP Food Processing option. Sealed NEMA 4X case with coated circuit boards and internal desiccant. For F4B, F16BN, and F22BN in absolute ranges



F20, F22B with RB rubber boot

Cecomp Test Plus includes red rubber boot, white LED backlight, ±0.1% accuracy in most ranges, all metal case, port reinforcement, coated circuit boards

Model	Ranges	NEMA	Backlight	Keypad	Calibration	Units	Memory	Shutoff
ARM760B	760 Torr absolute			1 button on/off	Front zero and span pots.	Factory set	none	Factory set to 5 minutes
ARM760BBL			Red LED					
DPG1000B range-time-options	Vacuum to 5000 psi, gauge, absolute, compound, bipolar	4X	Red LED	1 button on/off	Front zero and span pots.	Factory set	none	-5 5 min., factory set -10 10 min., factory set -30 30 min., factory set -ON on/off, factory set
DPG1000BBL range-time-options			Red LED					
F4B range-time-options			Red LED					
F4BBL range-time-options								
F16B range-time-options	Vacuum to 5000 psi, gauge, absolute, compound, bipolar	4X	Red LED	1 button on/off, zero, cycle through min/max	Startup and zero, pass code protected calibration via internal buttons, zero, span, linearity	Internal button select	Min/max user configurable	Internal button select to desired minutes or hours or continuous on
F16BBL range-time-options			Red LED					
F16BN range-time-options			Red LED					
F16BNBL range-time-options								
F20B range-memory-options	Vacuum to 5000 psi, gauge, absolute, compound, bipolar	4X	Red LED	3 button on/off, zero/clear, ▼, ▲	Keypad zero button, pass code protected calibration via keypad, zero, span, linearity	Keypad select	-M4 4 max readings -M8 8 max readings	Keypad select to desired minutes or hours or continuous on
F20BBL range-memory-options			Red LED					
F20BN range-memory-options			Red LED					
F20BNBL range-memory-options			Red LED					
F22B range-time-options	Vacuum to 5000 psi, gauge, absolute, compound, bipolar	4X	Red LED	3 button on/off, zero/clear, ▼, ▲	Keypad zero button, pass code protected calibration via keypad, zero, span, linearity	Keypad select	Min/max user configurable	Keypad select to desired minutes or hours or continuous on
F22BBL range-memory-options			Red LED					
F22BN range-memory-options			Red LED					
F22BNBL range-memory-options			Red LED					
CTP1B range-options	Vacuum to 5000 psi, gauge, absolute, compound, bipolar		White LED	3 button on/off, zero/clear, ▼, ▲	Keypad zero button, pass code protected calibration via keypad, zero, span, linearity	Keypad select	Min/max user configurable	Keypad select to desired minutes or hours or continuous on
CTP3B range-options			White LED					

INTRINSICALLY SAFE ULTRA RUGGEDIZED TEST GAUGES

- ❑ Class I, Division 1, Groups A, B, C, D
- ❑ All Metal Housing
- ❑ Digi-Max® with Min/Max, Zero
- ❑ ±0.25% Accuracy, 316L SS Sensor

- Battery Powered Test Gauges
- Natural Gas Pipeline Pressures
- Aircraft Tire Pressure
- NEC Hazardous Areas



Agency Approval

Factory Mutual Approved
Intrinsically Safe for Class I, Division 1,
Groups, A, B, C, D Hazardous Locations

Info Quick Link
cecomp.com/is



Ranges and Resolution

See range table for ranges and engineering units.
Standard: Range, resolution, and units are factory set
D4: Selectable engineering units

Display

Standard: 3.5 digit LCD, 0.5" H
D4: 4 digit LCD, 0.5" H, 0.25" H alphanumeric lower
BL: Red LED display backlight
3 readings per second update rate

Accuracy

Standard: ±0.25% of full scale ±1 least significant digit
Optional: HA ±0.1% FS ±1 LSD (most ranges)

Batteries

Two AAA alkaline



DPG2000B with RB Rubber Boot



DPG2000B_-D4 with RB Rubber Boot



DPG2000B_-D4-Mx with RB Rubber Boot



Aircraft Tire Pressure



Honeywell TFE Jet Engine Testing



Natural Gas Distribution Pressure Test Kits



Industrial Gauge Manifold



Aircraft Strut Check

Model	Ranges	Keypad	Display	Backlight	Bat. Hrs.	Calibration	Units	Memory	Auto Shutoff
DPG2000B range-time-options	Vacuum to 1999, gauge, absolute, bipolar	1 button on/off	3.5 digit LCD, 0.5" H.	none	1000	Top zero and span pots.	Factory set	none	-5 5 min. factory set
DPG2000BBL range-time-options				Hold button	150-1000				-10 10 min. factory set
DPG2000B range-D4-time-options	Vacuum to 5000 psi, gauge, absolute, compound, bipolar	1 button on/off/zero	4 digit LCD, 0.5" H and 5 character alphanumeric display	none	1000	Internal buttons, lockout switch, zero, span, linearity	Internal button select	Min/max	Internal button select for minutes, hours, or on/off
DPG2000BBL range-D4-time-options				1 minute	150-750				
DPG2000B range-D4-M1-options	Vacuum to 5000 psi, gauge, absolute, compound, bipolar	3 button on/off, zero/clear, memory ▼, ▲	4 digit LCD, 0.5" H and 5 character alphanumeric display	none	1000	Keypad zero button, pass code protected calibration via keypad internal lockout switch, zero, span, linearity	Keypad select	M1 continuous max rdg.	Keypad select for minutes, hours, or on/off
DPG2000BBL range-D4-M1-options				1 minute	150-750				
DPG2000B range-D4-M2-options				none	1000				
DPG2000BBL range-D4-M2-options				1 minute	150-750				
DPG2000B range-D4-M4-options				none	1000				
DPG2000BBL range-D4-M4-options				1 minute	150-750				
DPG2000B range-D4-M6-options				none	1000				
DPG2000BBL range-D4-M6-options				1 minute	150-750				
DPG2000B range-D4-M8-options				none	1000				
DPG2000BBL range-D4-M8-options				1 minute	150-750				

NEW DIFFERENTIAL PRESSURE GAUGES

Quick Link cecomp.com/dp

- ❑ Ranges from ± 0.25 inH₂O to 100 inH₂O
- ❑ Mount in Industry-Standard Openings
- ❑ $\pm 0.25\%$ to $\pm 2\%$ Accuracy
- ❑ Positive, negative, or differential pressure

Cecomp economical low-range differential pressure gauges are a direct drop-in replacement for similar products. All have high and low rear pressure connections and are compatible with air or non-combustible, non-corrosive gases. See datasheets for complete specifications.

S2000

A low-cost, diaphragm-operated, mechanical pressure gauge with an accuracy of $\pm 2\%$ in most ranges and an accuracy of $\pm 3\%$ or $\pm 4\%$ in low ranges. An optional adjustable signal flag is available for min/max indication.

- Clean Room Pressure, Glove Boxes
- Fan, Blower, or Duct Static Pressure
- Filters, Dust Collectors, Cabinet Purging
- Pneumatic Conveyors, Paint Booths

C series are microprocessor-based digital differential pressure gauges using an extremely stable piezoresistive sensor. A 4-20 mA output is optional.

C1000

Bright red 1/2" high LED display.

C2000

Adds an LED bar graph for process level indication.

C4100

Adds an OLED display for programming, 2 SPDT alarm relays, min/max, and pitot tube air velocity and flow.

Model	Ranges	Units	Output
S2000 series	± 0.25 to 100 inH ₂ O	inH ₂ O, Pa, kPa, mmH ₂ O dual scale inH ₂ O/Pa or inH ₂ O, kPa	none
C1000 series	± 0.25 inH ₂ O to	5 user selectable units	Optional 4-20 mA
C2000 series			
C4100 series	± 40 inH ₂ O	11 user selectable units, plus flow and velocity	2 SPDT relays, optional 4-20 mA



LOW VOLTAGE POWERED GAUGES

- ❑ Ideal for Permanent Installations
- ❑ 8-24 VAC or 9-32 VDC Input Power
- ❑ Digi-Max® with Min/Max, Zero
- ❑ $\pm 0.25\%$ Accuracy, 316L SS Sensor

- Plant Compressed Air Pressure
- Pneumatic Machinery Monitoring
- ARM Replaces Mercury Manometers
- Monitor Vacuum Pumps

Ranges

See range table for available engineering units

Standard: Range, resolution, and units are factory set
F16: Selectable engineering units

Accuracy

Standard: $\pm 0.25\%$ of full scale ± 1 least significant digit
Optional: HA $\pm 0.1\%$ FS ± 1 LSD (most ranges)

Display

DPG1000, F4 ranges to 1999, ARM760
3.5 digit LCD, 0.5" H digits

DPG1000, F4 ranges 2000-up, all F16
4 digit LCD, 0.5" H, 0.25" H alphanumeric lower display

3 readings per second nominal display update rate

BL: Red LED display backlight on when gauge is on

Controls

DPG1000, F4 ranges to 1999, ARM760
Front on/off button

DPG1000, F4 ranges 2000-up
Front on/off button, zeros display at power-up

F16

Front button for zero at power-up, min/max functions
selectable engineering units via internal buttons

Power

AD: 8-24 VAC or 9-32 VDC, approx. 5 mA

ADBL: 8-24 VAC or 9-32 VDC, approx. 80 mA

ARM760: 115 VAC/12 VDC plug-in power supply included, 5 ft cable

2 wire, 3 ft long, 22 AWG cable

All models are designed for continuous operation

Info Quick Link
cecomp.com/ad



Pressure Regulator Testing



Model	Power	Ranges	NEMA	Backlight	Calibration	Units	Memory
ARM760AD	115V/12VDC included	760 Torr absolute			Front zero and span pots.	Factory set	none
ARM760ADBL				Red LED			
DPG1000AD range-options	8-24 VAC or 9-32 VDC	Vacuum to 5000 psi, gauge, absolute, compound, bipolar			Front zero and span pots.	Factory set	none
DPG1000ADBL range-options				Red LED			
F4AD range-options				4X			
F4ADBL range-options				4X			
F16AD range-options	8-24 VAC or 9-32 VDC	Vacuum to 5000 psi, gauge, absolute, compound, bipolar			Hold button at startup to zero, pass code protected calibration via internal buttons, zero, span, linearity	Internal button select	Min/max, user configurable
F16ADBL range-options				Red LED			
F16ADN range-options				4X			
F16ADNBL range-options				4X			

PRESSURE AND VACUUM TRANSMITTERS

- ❑ Transmitters with Local Display
- ❑ 4-20 mA 2 Wire Loop Powered Models
- ❑ 4 Wire 4-20 mA or Voltage Output
- ❑ Output Test Function

Ranges

See range table for available engineering units
 Ranges and engineering units are factory set

Accuracy

Standard: $\pm 0.25\%$ of full scale ± 1 least significant digit
 Optional: HA $\pm 0.1\%$ FS ± 1 LSD (most ranges)

Display

DPG1000L, F4L, DPG1000DR, F4DR

3.5 digit LCD, 0.5" H digits

3 readings per second nominal display update rate

F16L, F16DR

4 digit LCD, 0.5" H, 0.25" H alphanumeric lower display

4 readings per second nominal display update rate

DRBL: Red LED display backlight on when gauge is on

Controls

DPG1000L, F4L, DPG1000DR, F4DR: Output test button

F16L, F16DR: Output test, keypad setup

Power

L models: 8 to 32 VDC, powered by current loop
 2 wire, 3 ft long, 22 AWG cable

DR models: 8 to 24 VAC 50/60 Hz or 9 to 32 VDC,
 1.0 watt maximum. Use WMPK power supply kit to operate on 115 VAC
 4 wire shielded, 3 ft long, 22 AWG cable for power and output

All models are designed for continuous operation

Output

DPG1000L, F4L

4-20 mA analog output, 50 milliseconds typical response

F16L

4-20 mA output, updated approx. 16 times per sec.

DPG1000DR, F4DR

-I: 4-20 mA analog output, 50 millsec. typ. response

-V: 0-2 VDC analog output, 50 millsec. typ. response

F16DR

Updated approximately 16 times per second

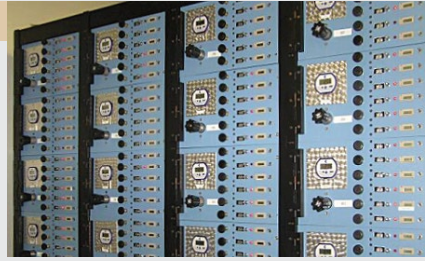
-I: 4-20 mA output

-V: 0-2 VDC output

-BV: ± 2 VDC output for bipolar ranges only

- Pressure Input to PLC
- Tank Level Transmitter
- Pump Pressure Transmitter
- Pressure Transmitter to Datalogger

Info Quick Link
cecomp.com/trans



Pipe Pressure Testing System



DPG1000L



F4L
NEMA 4X



NEW!

F16LSC 4-20mA Loop Transmitter
 with Super Cap Display Backup



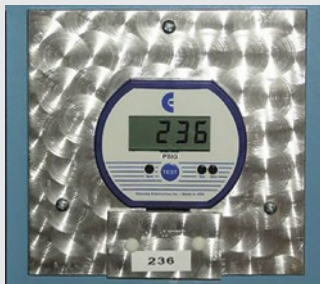
F16L



F16DR



F4DR,
NEMA 4X



Pipe Pressure Testing System

Model	Power	Ranges	NEMA	Backlight	Calibration	Output Test	Output
DPG1000L range-options	8-32 VDC, 2 wire loop-powered	Vacuum to 1999, gauge, absolute, bipolar			Front zero and span pots.	Front pot. for test level	4-20 mA
F4L range-options			4X				
F16L range-options	8-32 VDC, 2 wire loop-powered	Vac to 5000 psi, gauge, absolute, compound, bipolar			Pass code protected calibration via keypad, zero, span, linearity	Keypad programmable test level	4-20 mA
F16LN range-options			4X				
F16LSC range-options	8-32 VDC, 2 wire loop-powered with super cap display backup	Vac to 5000 psi, gauge, absolute, compound, bipolar with selectable units			Pass code protected calibration via keypad, zero, span, linearity	Keypad programmable test level	Scalable 4-20 mA
F16LSCN range-options			4X				
DPG1000DR range-output-options	8-24 VAC or 9-32 VDC	Vacuum to 1999 psi, gauge, absolute, bipolar			Front zero and span pots.	Front pot. for test level	-I 4-20 mA -V 0-2 VDC
DPG1000DRBL range-output-options				Red LED			
F4DR range-output-options			4X				
F4DRBL range-output-options			4X	Red LED			
F16DR range-output-options	8-24 VAC or 9-32 VDC	Vacuum to 5000 psi, gauge, absolute, compound, bipolar			Pass code protected calibration via keypad, zero, span, linearity	Keypad programmable test level	-I 4-20 mA -V 0-2 VDC -BV ± 2 VDC
F16DRBL range-output-options				Red LED			
F16DRN range-output-options			4X				
F16DRNBL range-output-options			4X	Red LED			

PRESSURE ALARMS AND ALARMS WITH RETRANSMISSION OUTPUT

- ❑ Low Voltage AC/DC Powered
- ❑ 0.5 A Relays with Status LEDs
- ❑ Analog Output Available
- ❑ Output Test Function
- High or Low Pump Pressure Alarm
- Tank Level Monitor Plus Alarm
- Automated Leak-Down Testing
- Vacuum Pump Alarm

Ranges and Resolution

See range table for available engineering units
 Ranges and engineering units are factory set

Accuracy

Standard: $\pm 0.25\%$ of full scale ± 1 least significant digit
 Optional: HA $\pm 0.1\%$ FS ± 1 LSD (most ranges)

Display

4 digit LCD, 0.5" H, 0.25" H alphanumeric lower display
 4 readings per second nominal display update rate
 BL models: Red LED backlight on when gauge is on.
 LCD and bi-color (red/green) LED alarm indicators

Controls

Keypad to setup, configure, and display alarm trip points, acknowledge or toggle alarms

Alarm Outputs

Programmable dual form C (SPDT) relay contacts for HI/LO, HI/HI, LO/LO, normal or reverse acting with 1% deadband, or adjustable trip and reset points for each relay, manual or auto acknowledge.

1A/24VDC, 0.5A/115VAC, non-inductive
 120 milliseconds typical response time

Info Quick Link
cecomp.com/alarms



DAR Retransmission Output Options

Updated approximately 16 times per second

- I: Current output, 4-20 mA DC
- V: Voltage output, 0-2 VDC
- BV: Voltage output, ± 2 VDC

Power

8 to 24 VAC 50/60 Hz or 9 to 32 VDC
 Designed for continuous operation
 Use WMPSK power supply kit to operate on 115 VAC



Substation Transformer Nitrogen Blanketing

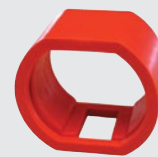


F16DAR

Model	Ranges	NEMA	Backlight	Calibration	Setup	Alarm Type	Output
F16ADA <i>range-options</i>	Vacuum to 5000 psi, gauge, absolute, compound, bipolar			Pass code protected calibration via keypad, zero, span, linearity	Keypad programmable alarm configuration, setpoints, test level	2 SPDT relays, field programmable configuration, 1% deadband or adjustable hysteresis	none
F16ADABL <i>range-options</i>			Red LED				
F16ADAN <i>range-options</i>		4X					
F16ADANBL <i>range-options</i>		4X	Red LED				
F16DAR <i>range-output-options</i>	Vacuum to 5000 psi, gauge, absolute, compound, bipolar			Pass code protected calibration via keypad, zero, span, linearity	Keypad programmable alarm configuration, setpoints, test level	2 SPDT relays, field programmable configuration, 1% deadband or adjustable hysteresis	Choose -I 4-20 mA -V 0-2 VDC -BV ± 2 VDC
F16DARBL <i>range-output-options</i>			Red LED				
F16DARN <i>range-output-options</i>		4X					
F16DARNBL <i>range-output-options</i>		4X	Red LED				

GAUGE ACCESSORIES AND OPTIONS

Cases	Description
DPG-OK2	Orange Pelican® case. 10.6" x 9.7" x 4.9", holds 1 or 2 gauges with room for fittings
DPG-OK3	Orange Pelican® case. 11.8" x 8.8" x 5.2", holds 1 to 3 gauges with room for fittings
DPG-OK6	Orange Pelican® case. 16.7" x 11.2" x 6.1", holds 1 to 6 gauges with room for fittings
Accessories	Description
RB	Orange protective rubber boot, orange, not for NEMA models
RBR	Red protective rubber boot, orange, not for NEMA models. Standard on CTP.
NC	NIST certificate; 5 test points, test date, NIST traceability documentation
CD	5 point factory calibration data with test date
SCR14SS	Filter screen fitting keeps debris out of gauge sensor. 303 SS body, 100 micron 304 SS screen. Recommended for food vacuum packaging applications. Vacuum to 4000 psi.
CON14SS	Quick connector allows installation or removal of gauge without tools. 304 stainless steel. Vacuum to 5000 psi.
WMPSK	Wall mount power supply kit, 115VAC/12VDC. For AD, DR, and DAR series
Options	Description—add option code to end of model number
-CC	Moisture resistant circuit board coating. Standard on DPG2000, CTP.
-FP	Sealed case, internal desiccant, -CC option. For absolute reference DPG1000 and F series only.
-HA	High accuracy, $\pm 0.1\%$ FS ± 1 LSD. Some ranges require 4 digit display. Not available with 3 or 5 psi sensor, compound, vacuum, or bipolar ranges. Standard on most CTP.
-PM	Panel mount, 4.1" x 4.1", not for NEMA models
-SM	Surface mount plate. Battery powered models only, not for NEMA models.
-MC	Metal front cover. Synthetic oil resistant. Std. on DPG2000, CTP. n/a NEMA models.
-TP	Top gauge port. Battery-powered gauges only, not for NEMA models.
-CS	Case stiffener to reinforce bottom of case for tire pressure apps. Std. on DPG2000, CTP.



RB Rubber Boot



DPG-OK6



DPG-OK2



DPG-OK3



SCR14SS Screen



CON14SS Connector



-TP Top Port



-PM Panel Mount



-CS Case Stiffener



WMPSK Power Supply



NC NIST Cert.

Pelican—Reg TM Pelican Products, Inc.

Cecomp maintains a constant effort to upgrade and improve its products. Specifications are subject to change without notice. Consult factory for your specific requirements.

RANGES

See price list for model-specific ranges and units. Consult factory for custom engineering units.

InHg/psig	Range Code	PSI
-29.9 inHg-15 psi	-30V15PSIG	-14.7-15.0
-29.9 inHg-100 psi	-30V100PSIG	-14.7-100
-29.9 inHg-200 psi	-30V200PSIG	-14.7-200
Pounds/sq. inch	Range Code	PSI
0-3 psi	3PSIG	3.0
0-5 psi	5PSIG	5.0
15-0 psia	15PSIA	15.0 abs
0-14.7 psi vac	15PSIGVAC	-14.7
-14.7-15.0 psi	±15PSIG	-14.7-15.0
0-15 psi	15PSIG	15.0
30-0 psia	30PSIA	30.0 abs
0-30 psi	30PSIG	30.0
0-60 psi	60PSIG	60.0
100-0 psia	100PSIA	100 abs
-14.7-100 psi	-15V100PSIG	-14.7-100
0-100 psi	100PSIG	100
-14.7-200 psi	-15V200PSIG	-14.7-200
0-200 psi	200PSIG	200
0-300 psi	300PSIG	300
0-500 psi	500PSIG	500
0-1000 psi	1000PSIG	1000
0-2000 psi	2000PSIG	2000
0-3000 psi	3000PSIG	3000
0-5000 psi	5000PSIG	5000
Inches Hg (0°C)	Range Code	PSI
0-6 inHg	6INHGG	3.0
0-10 inHg	10INHGG	4.9
30-0 inHg abs	30INHGA	14.7 abs
0-29.9 inHg vac	30INHGVAC	-14.7
-29.9-30.0 inHg	±30INHGG	±14.7
0-30 inHg	30INHGG	14.7
60-0 inHg abs	60INHGA	29.5 abs
0-60 inHg	60INHGG	29.5
0-120 inHg	120INHGG	58.9
200-0 inHg abs	200INHGA	98.2 abs
0-200 inHg	200INHGG	98.2
-29.9-200 inHg	-30V200INHGG	-14.7-98.2
0-400 inHg	400INHGG	196
-29.9-400 inHg	-30V400INHGG	-14.7-196
0-600 inHg	600INHGG	295
0-1000 inHg	1000INHGG	491
Inches H ₂ O (20°C)	Range Code	PSI
0-85 inH ₂ O	85INH2OG	3.1
0-140 inH ₂ O	140INH2OG	5.1
400-0 inH ₂ O abs	400INH2OA	14.5 abs
0-408 inH ₂ O vac	400INH2OVAC	-14.7
±408 inH ₂ O	±400INH2OG	±14.7
0-400 inH ₂ O	400INH2OG	14.5
850-0 inH ₂ O abs	850INH2OA	30.7 abs
0-850 inH ₂ O	850INH2OG	30.7
Feet H ₂ O (20°C)	Range Code	PSI
0-7 ftH ₂ O	7FTH2O	3.0
0-12 ftH ₂ O	12FTH2O	5.2
0-35 ftH ₂ O	35FTH2O	15.2
0-70 ftH ₂ O	70FTH2O	30.3
0-140 ftH ₂ O	140FTH2O	60.7
0-230 ftH ₂ O	230FTH2O	99.7
0-480 ftH ₂ O	480FTH2O	208
0-700 ftH ₂ O	700FTH2O	303
0-1150 ftH ₂ O	1150FTH2O	498
0-2300 ftH ₂ O	2300FTH2O	995
0-4600 ftH ₂ O	4600FTH2O	1991
0-6900 ftH ₂ O	6900FTH2O	2986
Ounces/sq. inch	Range Code	PSI
0-50 oz/in ²	50ZING	3.1
0-80 oz/in ²	80ZING	5.0
240-0 oz/in ² abs	240ZINA	15.0 abs
0-235 oz/in ² vac	240ZINVAC	-14.7
-235-240 oz/in ²	±240ZING	-14.7-15.0
0-240 oz/in ²	240ZING	15.0
0-480 oz/in ² abs	480ZINA	30.0 abs
0-480 oz/in ²	480ZING	30.0
mm H ₂ O (20°C)	Range Code	PSI
0-2100 mmH ₂ O	2100MMH2OG	3.0
0-3500 mmH ₂ O	3500MMH2OG	5.0

3.5 digit display indicates up to 19.99, 199.9, or 1999. Some ranges may require models with 4 digit display.

cm H ₂ O (20°C)	Range Code	PSI
0-200 cmH ₂ O	200CMH2OG	2.8
0-210 cmH ₂ O	210CMH2OG	3.0
0-350 cmH ₂ O	350CMH2OG	5.0
1000-0 cmH ₂ O abs	1000CMH2OA	14.2 abs
0-1000 cmH ₂ O vac	1000CMH2OVAC	14.2 vac
±1000 cmH ₂ O	±1000CMH2OG	±14.2
0-1000 cmH ₂ O	1000CMH2OG	14.2
0-2000 cmH ₂ O	2000CMH2OG	28.4
0-2100 cmH ₂ O	2100CMH2OG	29.9
kiloPascals	Range Code	PSI
0-20 kPa	20KPAG	2.9
0-35 kPa	35KPAG	5.1
100-0 kPa abs	100KPAA	14.5 abs
0-101 kPa vac	100KPAVAC	-14.7
-101-100 kPa	±100KPAG	-14.7-14.5
0-100 kPa	100KPAG	14.5
200-0 kPa abs	200KPAA	29.0 abs
0-200 kPa	200KPAG	29.0
0-400 kPa	400KPAG	58
700-0 kPa abs	700KPAA	102 abs
-101-700 kPa	-100V700KPAG	-14.7-102
0-700 kPa	700KPAG	102
-101-1400 kPa	-100V1400KPAG	-14.7-203
0-1400 kPa	1400KPAG	203
0-2000 kPa	2000KPAG	290
0-3500 kPa	3500KPAG	508
0-7000 kPa	7000KPAG	1015
MegaPascal	Range Code	PSI
-0.1-1.4 MPa	-0.1V1.4MPAG	-14.7-203
0-1.4 MPa	1.4MPAG	203
0-2 MPa	2MPAG	290
0-3.5 MPa	3.5MPAG	508
0-7 MPa	7MPAG	1015
0-14 MPa	14MPAG	2031
0-20 MPa	20MPAG	2901
0-35 MPa	35MPAG	5076
Millibar	Range Code	PSI
0-200 mbar	200MBARG	2.9
0-350 mbar	350MBARG	5.1
1000-0 mbar abs	1000MBARA	14.5 abs
0-1013 mbar vac	1000MBARVAC	-14.7
-1013-1000 mbar	±1000MBARG	-14.7-14.5
0-1000 mbar	1000MBARG	14.5
2000-0 mbar abs	2000MBARA	29.0 abs
0-2000 mbar	2000MBARG	29.0
0-4000 mbar	4000MBARG	58.0
Bar	Range Code	PSI
1-0 bar abs	1BARA	14.5 abs
1.01 bar vac	1BARVAC	-14.7
-1.01-1 bar	±1BARG	-14.7-14.5
0-1 bar	1BARG	14.5
2-0 bar abs	2BARA	29.0 abs
0-2 bar	2BARG	29.0
0-4 bar	4BARG	58.0
7-0 bar abs	7BARA	102 abs
-1.01-7 bar	-1V7BARG	-14.7-102
0-7 bar	7BARG	102
-1.01-14 bar	-1V14BARG	-14.7-203
0-14 bar	14BARG	203
0-20 bar	20BARG	290
0-35 bar	35BARG	508
0-70 bar	70BARG	1015
0-140 bar	140BARG	2031
0-200 bar	200BARG	2901
0-350 bar	350BARG	5076
grams/cm ²	Range Code	PSI
0-200 g/cm ²	200GCMG	2.8
0-350 g/cm ²	350GCMG	5.0
1000-0 g/cm ² abs	1000GCMA	14.2 abs
0-1037 g/cm ² vac	1000GCMVAC	-14.7
0-1000 g/cm ²	1000GCMG	14.2
2000-0 g/cm ² abs	2000GCMA	28.4 abs
0-2000 g/cm ²	2000GCMG	28.4
2100-0 g/cm ² abs	2100GCMA	29.9 abs
0-2100 g/cm ²	2100GCMG	29.9

Minus sign optional for vacuum models. 15 psig, 100 psig, 200 psig, and absolute sensors are for vacuum service.

kilograms/cm ²	Range Code	PSI
1-0 kg/cm ² abs	1KGCA	14.2 abs
0-1.03 kg/cm ² vac	1KGCMGVAC	-14.7
-1.03-1 kg/cm ²	±1KGCMG	-14.7-14.2
0-1 kg/cm ²	1KGCMG	14.2
2-0 kg/cm ² abs	2KGCA	28.4 abs
0-2 kg/cm ²	2KGCMG	28.4
0-4 kg/cm ²	4KGCMG	56.9
7-0 kg/cm ² abs	7KGCA	99.6 abs
-1.03-7 kg/cm ²	-1V7KGCMG	-14.2-99.6
0-7 kg/cm ²	7KGCMG	99.6
-1.03-14 kg/cm ²	-1V14KGCMG	-14.2-199
0-14 kg/cm ²	14KGCMG	199
0-20 kg/cm ²	20KGCMG	284
0-35 kg/cm ²	35KGCMG	498
0-70 kg/cm ²	70KGCMG	996
0-140 kg/cm ²	140KGCMG	1991
0-200 kg/cm ²	200KGCMG	2845
0-350 kg/cm ²	350KGCMG	4978
mmHg (0°C)	Range Code	PSI
0-150 mmHg	150MMHGG	2.9
0-260 mmHg	260MMHGG	5.0
760-0 mmHg abs	760MMHGA	14.7 abs
0-760 mmHg vac	760MMHGVAC	-14.7
±760 mmHg	±760MMHGG	±14.7
0-760 mmHg	760MMHGG	14.7
1600-0 mmHg	1600MMHGA	30.9 abs
0-1600 mmHg	1600MMHGG	30.9
Torr (0°C)	Range Code	PSI
760-0 Torr	760TORRA	14.7 abs
1600-0 Torr	1600TORRA	30.9 abs
Atmospheres	Range Code	PSI
1-0 atm abs	1ATMA	14.7 abs
0-1 atm vac	1ATMVAC	-14.7
±1 atm	±1ATMG	±14.7
0-1 atm	1ATMG	14.7
0-2 atm abs	2ATMA	29.4 abs
0-2 atm	2ATMG	29.4
0-4 atm	4ATMG	58.8
-1-7 atm	-1V7ATMG	-14.7-103
0-7 atm	7ATMG	103
-1-14 atm	-1V14ATMG	-14.7-206
0-14 atm	14ATMG	206
0-20 atm	20ATMG	294
0-34 atm	34ATMG	500
0-70 atm	70ATMG	1029
0-135 atm	135ATMG	1984
0-200 atm	200ATMG	2939
0-340 atm	340ATMG	4997

DPG AND F SERIES COMMON SPECIFICATIONS

Housings

Standard: 3.38" W x 2.88" H x 1.65" D
Aluminum case, plastic bezel, optional metal bezel
NEMA 4X: 3.5" W x 3.0" H x 2.0" D plastic case

Add approximately 0.75" to height for pressure fitting
Add 1" to depth for strain relief on powered models

Connection and Material

¼" NPT male, 316L SS wetted parts

Environmental

3-1/2 digit operating temp.: -40 to 185°F (-40 to 85°C)
4 digit operating temperature: -4 to 185°F (-20 to 85°C)
Compensated temperature: 32 to 158°F (0 to 70°C)



SANITARY PRESSURE GAUGES

Info Quick Link cecomp.com/san

- ±0.25% Accuracy
- 316L SS Wetted Parts
- 3-A Tri-Clamp®: 1.5" or 2"
- NEMA 4X Rated

Ranges

Vacuum, absolute
Pressure: 0-15 to 0-300 psi
in any engineering units

Battery Powered

Battery powered
backlit display
2 AA batteries

Transmitter

Loop powered transmitter
Powered by 8 to 32 VDC

Transmitter with Alarm

2 programmable SPDT alarm relays and 4-20mA output



DSGB1
Battery Powered

DSGB3
Battery Powered
Programmable

DSGL1
4-20 mA Loop
Powered

DSGL3
4-20 mA Loop
Powered

DSGA4
Transmitter with
Alarms

3 psig	5 psig	15 psig	14.7 psig vacuum
-14.7 to 15 psig	15 psia	30 psia	30 psig
60 psig	100 psia	-14.7 to 100 psig	100 psig
-14.7 to 200 psig	200 psig	300 psig	Tri-Clamp—Reg TM Alfa Laval Inc.

THERMOPRO® TEMPERATURE INDICATORS, TRANSMITTERS, ALARMS

- Precision RTD Element
- NEMA 4X Housing
- 316L Stainless Steel Probe
- 1/2" NPT for Standard Thermowells

Range

-58.0 to 392.0°F or -50.0 to 200.0°C, selectable

Resolution

0.1°F or 0.1°C resolution

Accuracy

±0.1% of span, plus maximum sensor error of
±0.3°C at 0°C, ±1.1°C at 150°C

Sensor

100 Ohm RTD element, 0.00385 alpha coefficient
IEC-751 Class B
10 second time constant

Probe

316L SS sheath, 1/4" diameter
Fixed length probe: Welded to hex nipple
Spring-loaded probe: For use with thermowells

Display

4 readings per second nominal display update rate
4 digit LCD, 0.5" digit height, alphanumeric lower display

Housing

NEMA 4X plastic case
3.5" W x 3.0" H x 2.0" D for housing only

Connection and Probe Material

1/2" NPT male, 316L stainless steel

Operating Temperature

-4 to 185°F (-20 to 85°C) at housing

T16B Battery Powered Indicator

Includes 2 AA batteries

T16L Loop Powered Transmitter

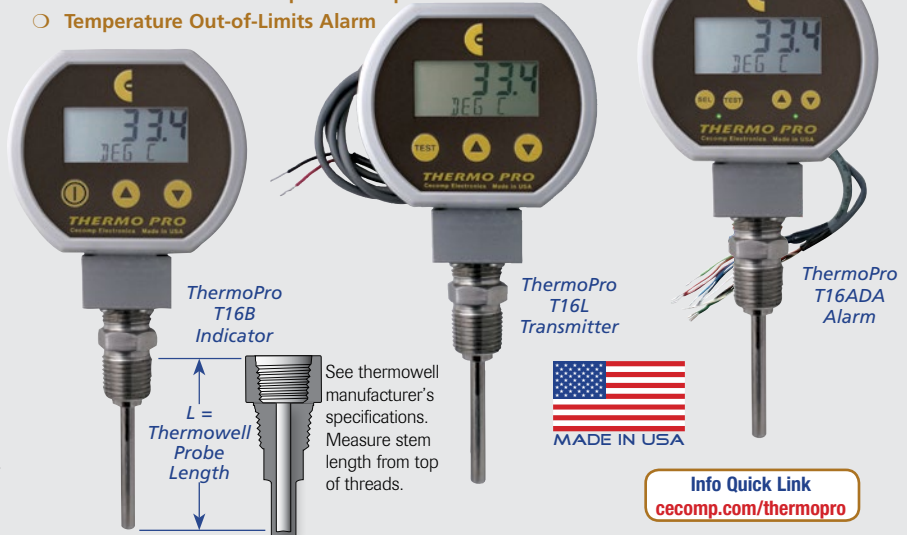
Configurable 4-20 mA output, updated 4 times per sec.
3 ft long, 2-conductor 22 AWG cable

T16ADA Dual Temperature Alarm

2 SPDT relays, 1A/24VDC, 0.5A/115VAC
Programmable setpoints, High or Low alarms, alarm
action, hysteresis

3 ft long, 2-conductor and 6-conductor 22 AWG cables

- Local Temperature Display
- Refrigerator or Oven Temperatures
- Transmitter for PLC Temperature Input
- Temperature Out-of-Limits Alarm



ThermoPro
T16B
Indicator

ThermoPro
T16L
Transmitter

ThermoPro
T16ADA
Alarm

L =
Thermowell
Probe
Length

See thermowell
manufacturer's
specifications.
Measure stem
length from top
of threads.



Info Quick Link
cecomp.com/thermopro



Air Dryer Outlet Temperature



Fixed Length Probe	Spring-Loaded for Thermowells	Length "L"	Features	Power
T16B2	T16B2S	2.5" L	Battery powered temperature indicator	2 AA batteries, 1000 hrs.
T16B4	T16B4S	4" L		
T16B6	T16B6S	6" L		
T16B9	T16B9S	9" L		
T16B12	T16B12S	12" L		
T16BBL2	T16BBL2S	2.5" L		
T16BBL4	T16BBL4S	4" L		
T16BBL6	T16BBL6S	6" L		
T16BBL9	T16BBL9S	9" L		
T16BBL12	T16BBL12S	12" L		
T16L2	T16L2S	2.5" L	2 wire 4-20 mA loop powered transmitter	8-32 VDC loop power
T16L4	T16L4S	4" L		
T16L6	T16L6S	6" L		
T16L9	T16L9S	9" L		
T16L12	T16L12S	12" L		
T16ADA2	T16ADA2S	2.5" L		
T16ADA4	T16ADA4S	4" L		
T16ADA6	T16ADA6S	6" L		
T16ADA9	T16ADA9S	9" L		
T16ADA12	T16ADA12S	12" L		
T16ADABL2	T16ADABL2S	2.5" L	Temperature alarm, 2 SPDT relays, programmable, with red LED display backlight	8-24 VAC or 9-32 VDC
T16ADABL4	T16ADABL4S	4" L		
T16ADABL6	T16ADABL6S	6" L		
T16ADABL9	T16ADABL9S	9" L		
T16ADABL12	T16ADABL12S	12" L		